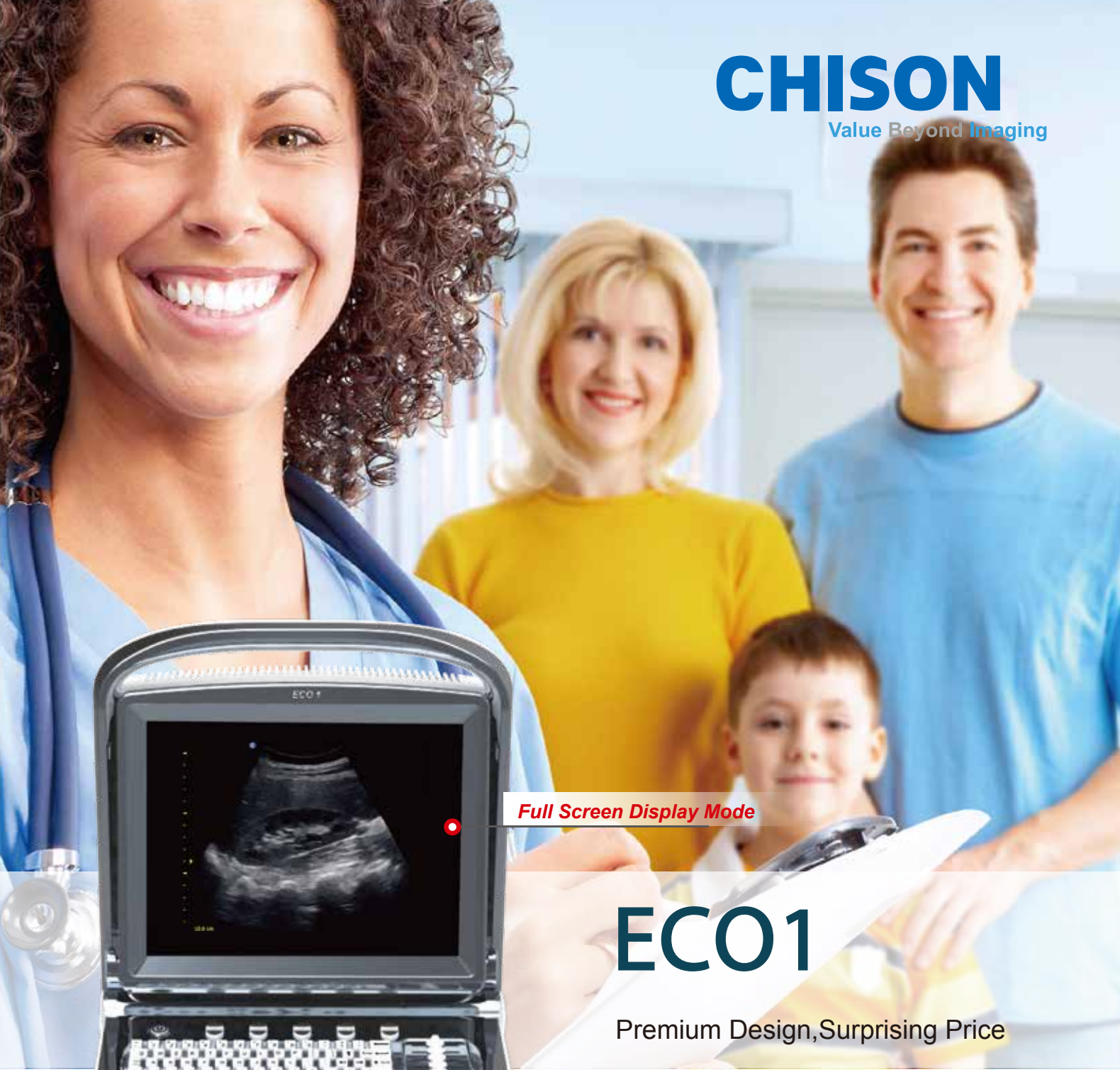


**CHISON**  
Value Beyond Imaging



*Full Screen Display Mode*

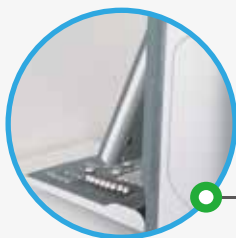
# ECO1

Premium Design, Surprising Price



[WWW.CHISON.COM](http://WWW.CHISON.COM)

# User-friendly and Modern Design



12 inch rotatable LED monitor (0~30°) with different viewing angles



Vehicle Power Charger



One key to quickly save



Water-proof keyboard Cover



DICOM 3.0 (option), USB

# ECO1

Premium Design, Surprising Price



Ultra-compact

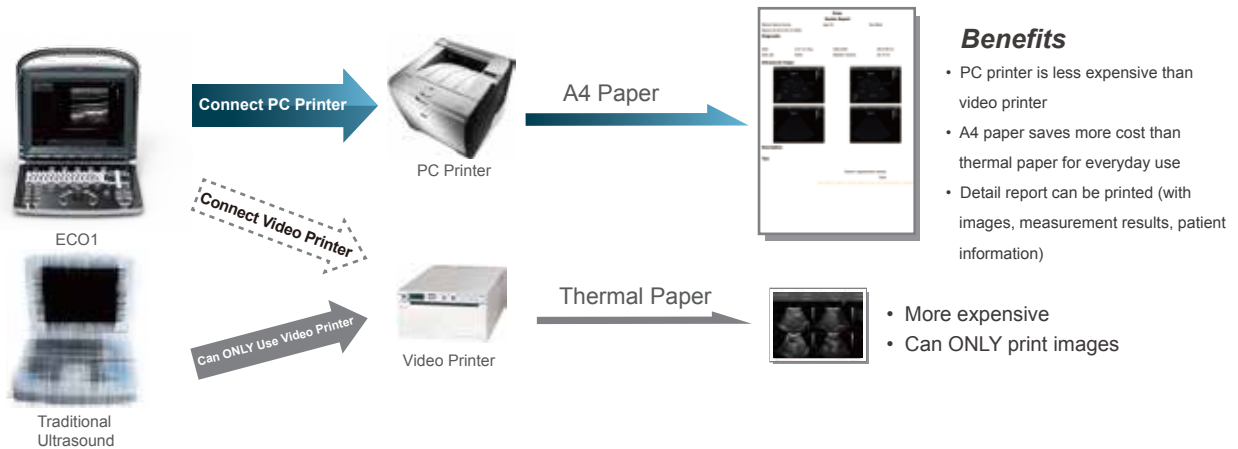


Clips for quickly recall (CINE, Still images)



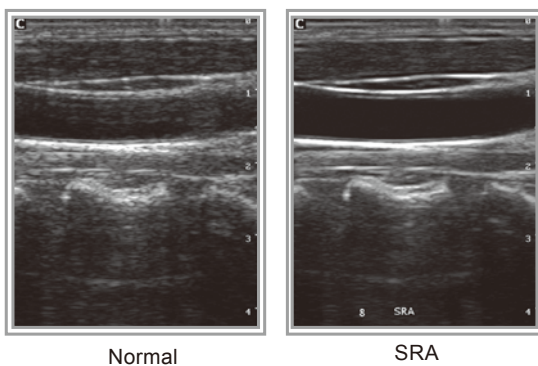
Carrying case (BG-100): go anywhere you want

## Support PC Printer



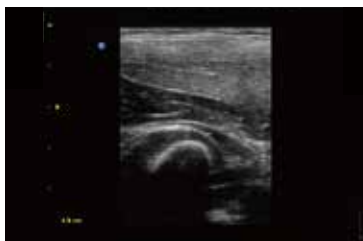
## Advanced Technologies

### Speckle Reduction Algorithm(SRA)



SRA is the technique that uses a variety of denoising algorithm to suppress speckle, smooth the tissue images, and make the faint edge more appearing.

## Great image quality



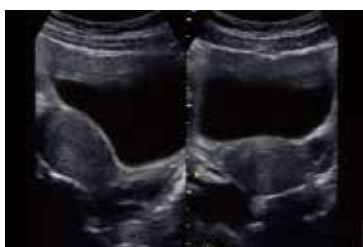
Elbow Joint, B Mode



Fetal Hand, B Mode



Fetal Head, B Mode



Uterus, 2B Mode



Follicle, B Mode



Kidney, B Mode

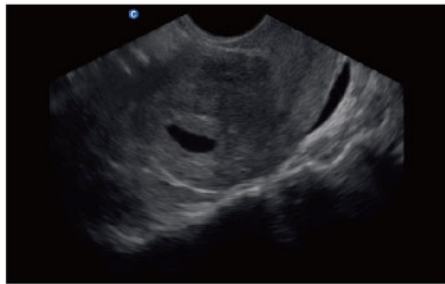
# Excellent PW

resolution and automatic  
PW trace measurement will greatly improve the diagnosis  
confidence by delivering both qualitative & quantitative results.

## Great image quality



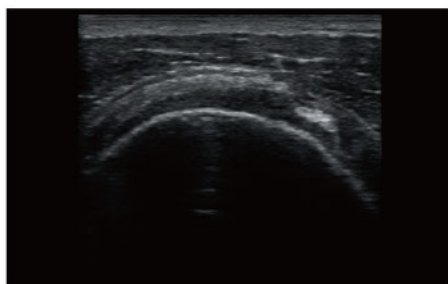
Median Sagittal Section, B Mode



Early Pregnancy, B Mode



Kidney, B Mode



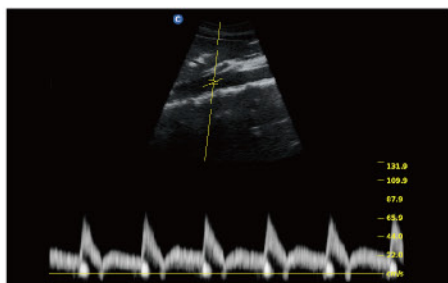
Subscapularis Tendon, B Mode



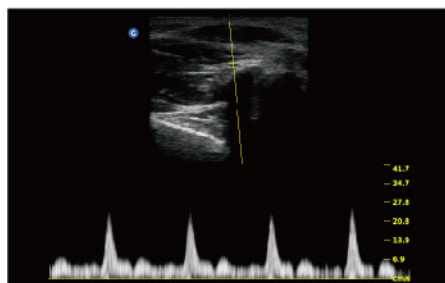
Thyroid, B Mode



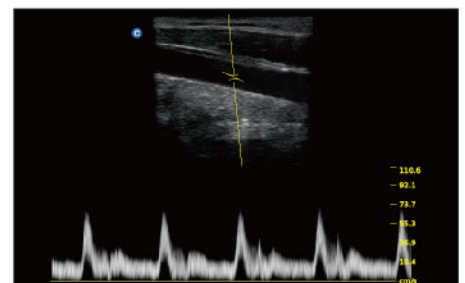
Gallbladder, B Mode



Aorta Artery, PW Mode



Thumb Artery, PW Mode



Carotid, PW Mode

# Specifications

Applications	Abdominal, OB/GYN, Urology, Pediatric, Small Organ(breast, testes, thyroid); Cardiac, Peripheral Vascular, Musculoskeletal Conventional & Superficial
Display Modes	B, B/B, 4B, M, B/M, PW
Zoom	PIP zoom & Pan zoom
Advanced Technologies	THI, i-Image, SRA, Compound
Option	2nd Probe Connector, DICOM 3.0, Water-proof keyboard Cover, Carrying Case (BG-100 ), Support PC Printer, TR 9000, Built-in Battery



2.5MHz - 5.0MHz Convex  
C3-A



5.3-10.0MHz Linear  
L7M-A



5.3-11.0MHz Linear  
L7S-A



2.5 MHz-5.0MHz Micro-Convex  
MC3-A



4.5 MHz -8.0MHz Transvaginal  
V6-A



4.5MHz - 8.0MHz Micro-Convex  
MC6-A

## CHISON Medical Technologies Co., Ltd

### Sales & Service Contact Address:

No.9, Xinhuihuan Road, Xinwu District, Wuxi, Jiangsu, China 214028

TEL: 0086-510-85310593 / 85310937 FAX: 0086-510-85310726 EMAIL: export@chison.com.cn