



QBit 9



Ergonomics



19" LED up & down

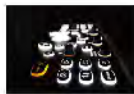
90° foldable

Depth View



The LED screen can be rotated left and right $-90^{\circ}\sim 90^{\circ}$ allow different viewing angles of patients and operators

Stereo audio system



Backlit keys

Floating keyboard with left/right rotation $-45^{\circ}\sim 45^{\circ}$, up/down height adjustment 0cm~15cm



USB ports



Hero Kit

Innovative service solution
Quick • Easy • Reliable • Affordable



Removable dust filter.

Built-in battery 80min (option)



Print paper face to the front, for easy access.

35.6 cm
Small foot print

Four wheels with locks



Virtual HD

- The latest innovation in real-time 4D with powerful imaging engine.
- Greatly strengthen the bond between mother and fetus. With moveable virtual light source.



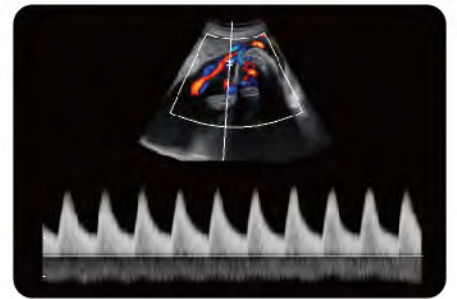
♀ Women's healthcare



BPD,B Mode



Umbilical Cord,C Mode



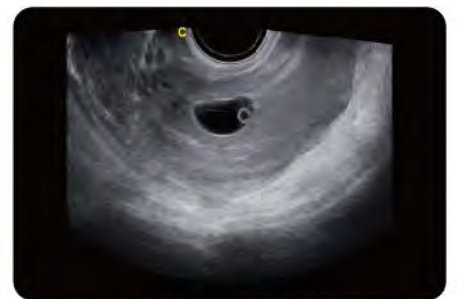
Umbilical Cord,PW Mode



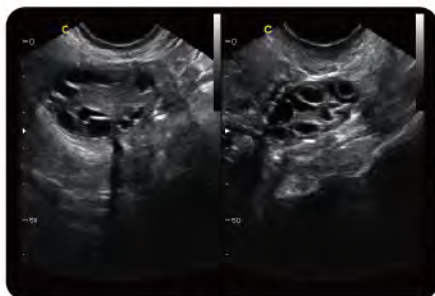
Breast Cyst,B Mode



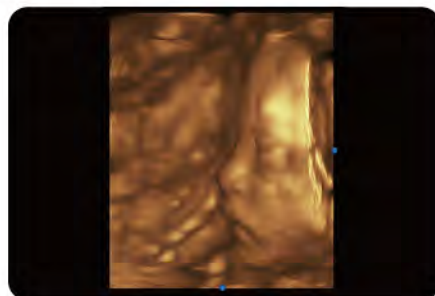
Uterus,B Mode



Early Pregnancy,B Mode



Ovary,2B Mode



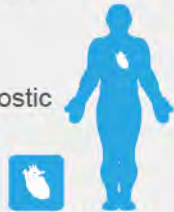
Fetal Face,4D Mode



Fetal Body,Virtual HD

FHI

- An innovative harmonic technology that using different transmission and receiving methods for different body sized patients, to maximize the resolution without losing the penetration.
- Better than traditional THI and phased harmonic which compromise the penetration.
- This greatly helps to improve diagnostic confidence on big patients.

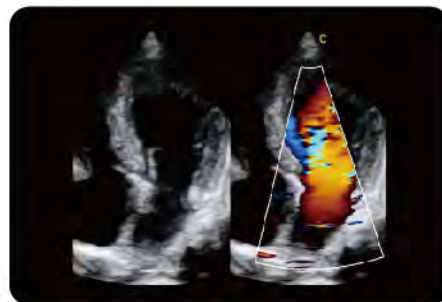


Cardiology Performance

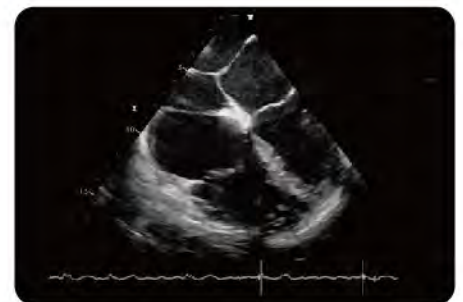
QBit 9



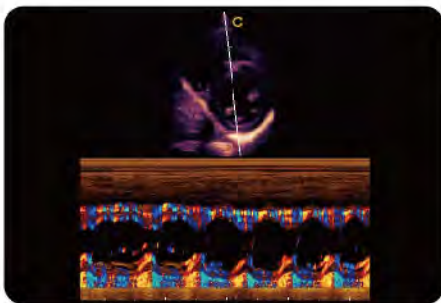
Apical Four Chambers, FHI Mode



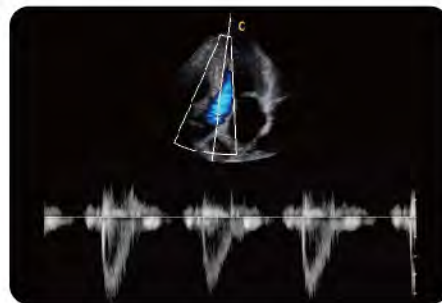
Apical Four Chambers, C Mode



Cardiac, TEE



Papillary Muscle Short Axis, TDI M Mode



Aortic Valve, PW Mode



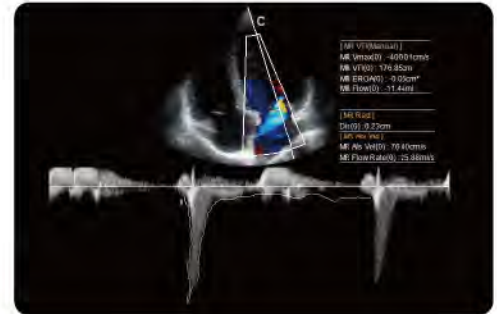
AV Regurgitation, CW Mode

State-Of-Art Performance



PISA

PISA is Proximal Isovelocity Surface Area, a method to look at flow convergence, to calculate severity of MR/TR/PR.

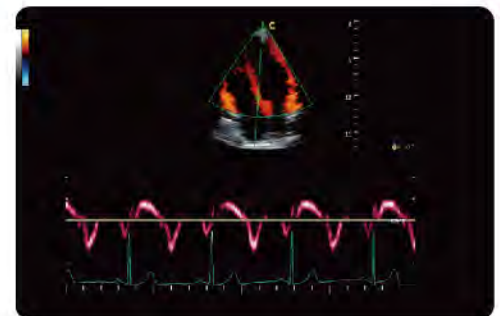


StressEcho

An echocardiogram is a painless, harmless test that uses high frequency sound waves to examine the heart's anatomy function.

Tissue Doppler Imaging (TDI)

Tissue Doppler imaging is a novel echocardiography technique that directly measures myocardial velocity. Systolic TD measurements assess left and right ventricular myocardial contractile function. Diastolic TD values reflect myocardial relaxation.



Free Steering M Mode

The cursor line can be rotated in 360 degree and placed at the desired position up to 3 lines can be used for simultaneous measurements.

Advanced Technologies

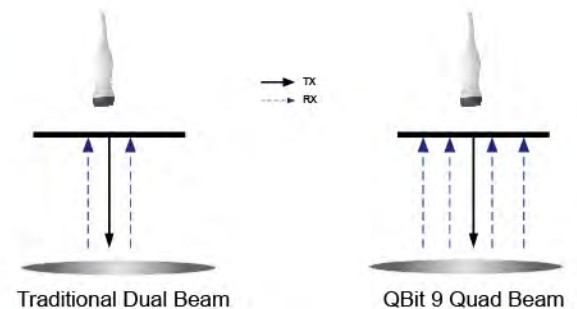
Q-image

- These innovative algorithms have strengthened the image enhancement results significantly.
- Advanced chipset is used to ensure fast frame rate.



Q-beam

- Compared to the traditional dual-beam, QBit uses quad-beam to receive signal, thus doubles the volume of signal received as well as the frame rate.
- Higher frame rate ensures better diagnostic confidence and efficiency.



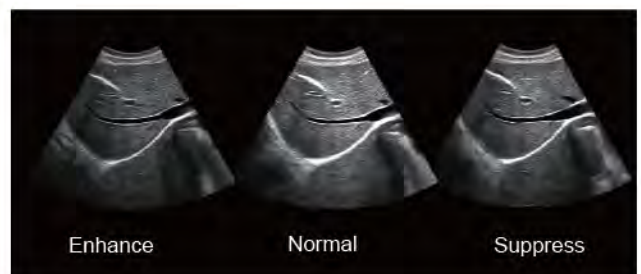
Q-flow

- This adaptive color detection technology can automatically adjust the assessment of color signal and noise according to different tissues.
- As a result, color sensitivity of low-velocity flow is greatly enhanced.



X-contrast

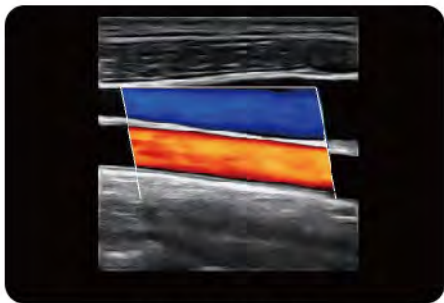
- Contrast resolution can be set at 3 different levels according to the tissue difference.
- Activated by one key: Enhance, Normal, Suppress.





General Imaging

Small Parts



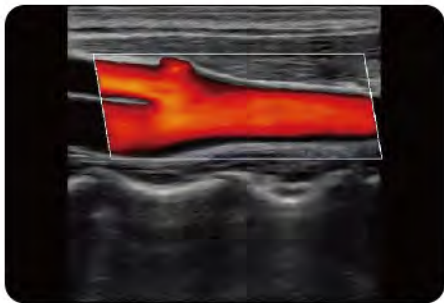
Carotid, C Mode



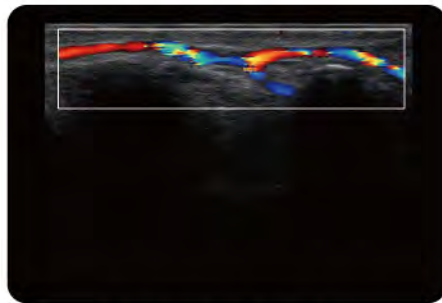
Elbow Point, B Mode



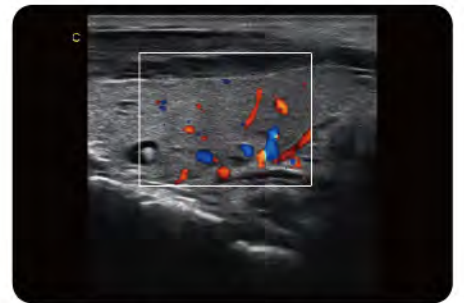
Thyroid, B Mode



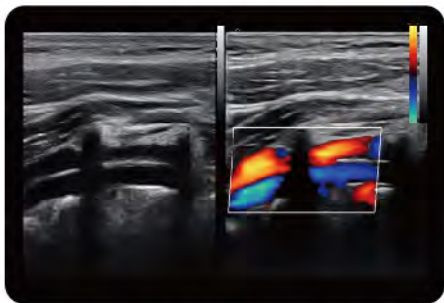
Carotid, C Mode



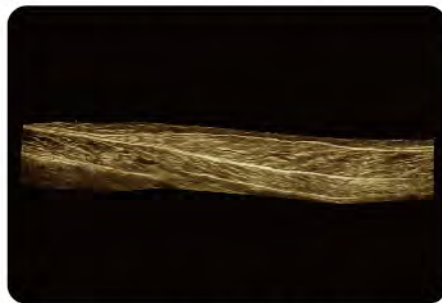
Finger Vessel, C Mode



Thyroid, C Mode



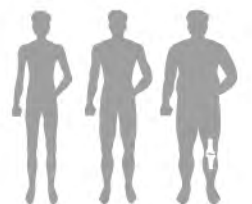
Vertebral Artery, 2B Mode



Muscle, Real Time Panoramic



Kidney, C Mode



QBit 9

Smart Ultrasound



CHISON Medical Technologies Co., Ltd.

Sales & Service Contact Address:

No.9, Xinhuihuan Road, Xinwu District, Wuxi, Jiangsu, China 214028

T E L : 0086-510-85310593 / 85310937

F A X : 0086-510-85310726

E M A I L : export@chison.com.cn

We reserve the right to make changes to this catalogue without prior notice.
Please contact our local dealer for the latest information.